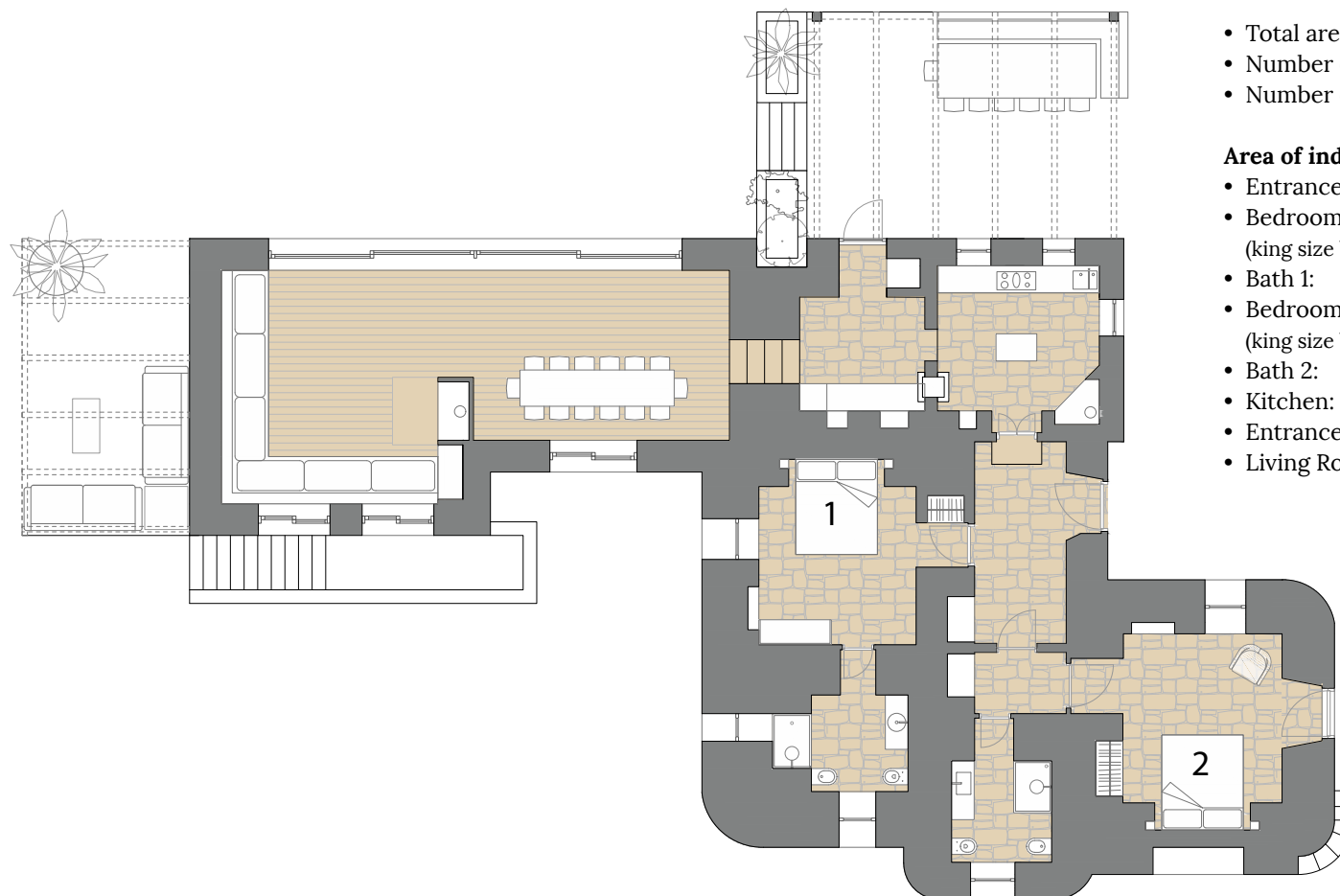


Trulli

This building was established around a structure from the 1800s with a vaulted ceiling and now contains the kitchen; the 4 trulli have been connected to this environment, rebuilt from the rubble, and now house two spacious double bedrooms and two bathrooms. The large newly built living room overlooking the pool has timber beams and is equipped with a fireplace, which is useful for cool evenings or off season. The other rooms are with stone vaulted ceilings including the entrance and the kitchen.



- Total area: mq. 134,00/ sq.ft. 1442,36
- Number of bedrooms: 2
- Number of bathrooms: 2

Area of individual rooms:

- Entrance: mq. 13,20/ sq.ft. 142,08
- Bedroom 1: mq. 15,15/ sq.ft. 163,07
(king size bed 180x200cm)
- Bath 1: mq. 6,65/ sq.ft. 71,58
- Bedroom 2: mq. 18,40/ sq.ft. 198,05
(king size bed 180x200cm)
- Bath 2: mq. 6,50/ sq.ft. 69,96
- Kitchen: mq. 12,80/ sq.ft. 137,77
- Entrance: mq. 9,00/ sq.ft. 96,87
- Living Room: mq. 53,00/ sq.ft. 570,48

Lamia

This small farmhouse is an ancient building characterized by stone vaults, the entrance space (from which derives the name of the building) is barrel vaulted and leads into the 4 bedrooms, each one equipped with a bathroom, and covered by typical star vaults you can find in Puglia. It is furnished with a beautiful courtyard which is large and spacious.



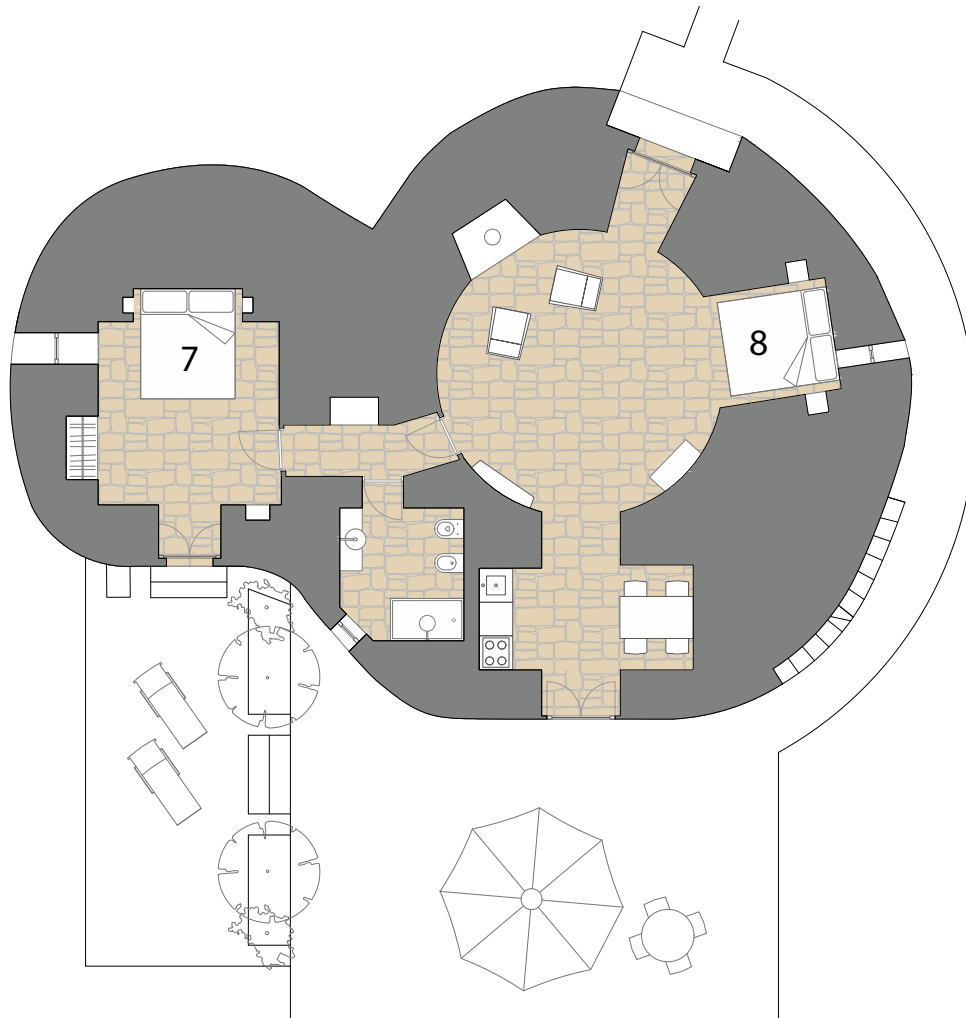
- Total area : mq. 95,30/ sq.ft. 1025,80
- Number of bedrooms : 4
- Number of bathrooms : 4

Area of individual rooms:

- Living Room: mq. 16,40/ sq.ft. 176,52
- Bedroom 3: mq. 14,50/ sq.ft. 156,07
(king size bed 180x200cm)
- Bathroom 3: mq. 5,30/ sq.ft. 57,04
- Bedroom 4: mq. 12,70/ sq.ft. 136,70
(king size bed 180x200cm)
- Bathroom 4: mq. 5,60/ sq.ft. 60,27
- Bedroom 5: mq. 14,00/ sq.ft. 150,69
(king size bed 180x200cm)
- Bathroom 5: mq. 5,80/ sq.ft. 62,43
- Bedroom 6: mq. 12,30/ sq.ft. 132,39
(2x bunk beds 90x200cm)
- Bathroom 6: mq. 4,50/ sq.ft. 48,43
- Store: mq. 4,20/ sq.ft. 45,20

Saraceno

The Trullo Saraceno, also called the Tower of Ostuni for its frequent presence in the territory, consists of a large 16th Century Trullo, exceptional for its size, and a second more recent construction obtained by rebuilding from the ruins. This building is also equipped with a small kitchen and a beautiful courtyard and could be used autonomously.

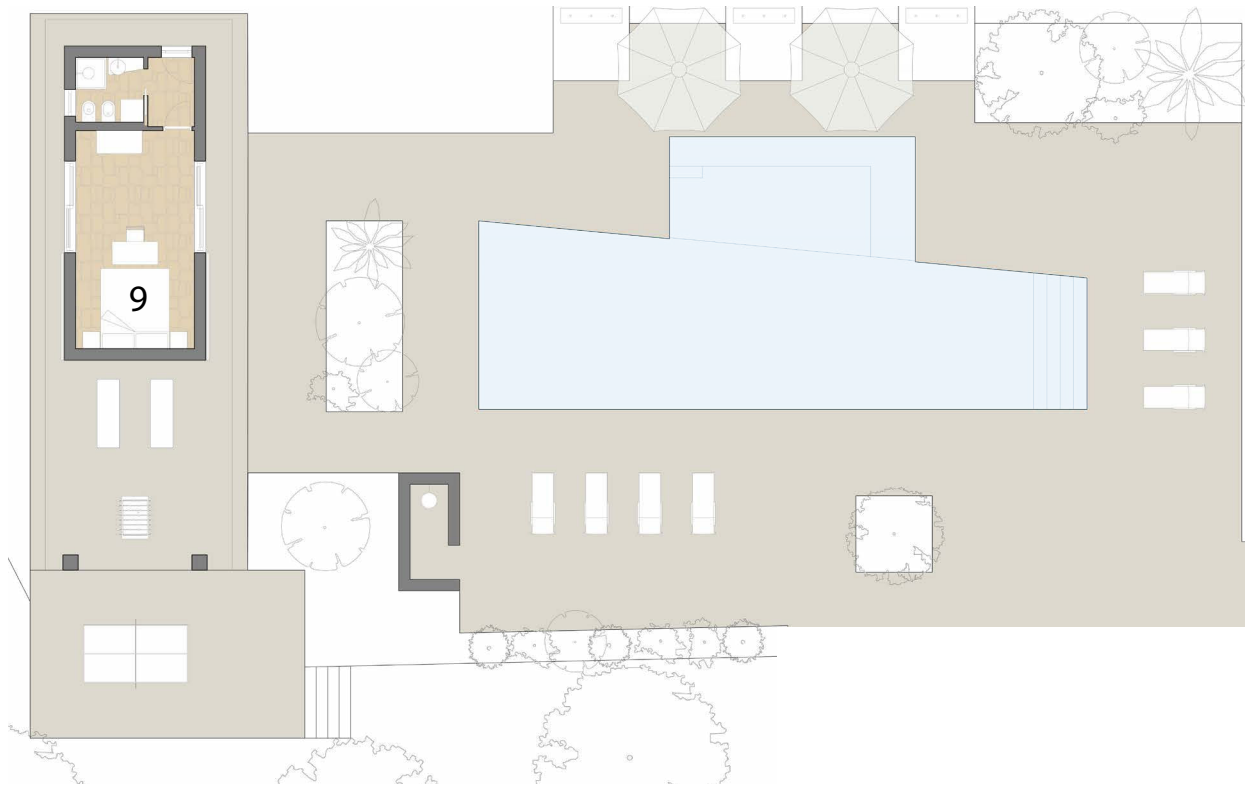


- Total area: mq. 67,80/ sq.ft. 729,79
- Number of bedrooms: 2
- Number of bathrooms: 1

Area of individual rooms:

- Bedroom 7: mq. 15,70/ sq.ft. 169
(king size bed 180x200cm)
- Bathroom 7: mq. 6,30/ sq.ft. 67,81
- Bedroom 8: mq. 32,10/ sq.ft. 345,52
(king size bed 180x200cm)
- Kitchen: mq. 10,00/ sq.ft. 107,63
- Corridor: mq. 3,70/ sq.ft. 39,82

Pool, Holiday Cabin & Wellness



Swimming Pool

- Total area: mq. 8,60/ sq.ft. 92,56
- Length and width maximum: 7,20 x 16,00 m
- Minimum depth: 0,80 m
- Maximum depth: 1,40 m
- Pool opening date: March
- Pool closing date: November

Holiday Cabin

- Total area: mq. 23,00/ sq.ft. 247,57
- Number of bedrooms: 1
- Number of bathrooms: 1

Area of individual rooms :

- Bedroom 9: mq. 17,80/ sq.ft. 191,59
(king size bed 180x200cm)
- Bathroom: mq. 3,00/ sq.ft. 32,29
- Entrance: mq. 2,20/ sq.ft. 23,68
- Outdoor covered area: mq. 20,50/ sq.ft. 220,66

Gym and Wellness Area

- Outdoor uncovered area: mq. 31,70/ sq.ft. 341,21